


THE PERSPECTIVES OF PALEOGENETICS IN ALBANIA: INSIGHTS FROM FOSSIL AND SEDIMENTARY DNA

Andreea UTA, Ana FOCIRO and Mensi PRELA

Faculty of Geology and Mining, Polytechnic University of Tirana,
Albania

Author for correspondence: andreauta@gmail.com

 AU, 0000-0001-7380-4702;
AF, 0000-0002-0753-1934
MP 0009-0007-4894-9951

Paleontology, sedimentology, and DNA are closely connected through a common objective: to understand, as comprehensively as possible, the evolution of life on Earth. Paleontology, the science that studies fossils, directly provides morphological evidence of organisms that lived in the past, while the study of ancient DNA (*aDNA*) from fossils and sediments enables the investigation of genetic relationships between extinct and extant, as well as their interactions with the environments in which they lived. Advances in DNA sequencing have revolutionized the paleogenetics, an interdisciplinary field that combines paleontological methods with molecular biology, thereby facilitating clarification of evolutionary processes over long geological timescale. Consequently, the relationship between paleontology and DNA can be considered almost symbiotic, and indispensable, as both disciplines collaborate to reconstruct, in detail, the biological past of our planet. Paleogenetics relies on the analysis of ancient DNA (*aDNA*) extracted from fossils, bones, teeth, mummified tissues, and other biological remains, as well as from sediments, using modern molecular biology techniques *such as polymerase chain reaction (PCR)* and high-precision genomic sequencing. The analysis of DNA extracted from relatively well-preserved fossils, such as those of *Coelodonta antiquitatis* (Figure 1), *Mammuthus primigenius* (Figure 2), or *Homo neanderthalensis* (Figure 3) and other prehistoric animals preserved in the permafrost deposits in Siberia, Alaska, or Canada, provides valuable insights into genetic structure, biological adaptations,

diseases, migration patterns, and interactions among prehistoric populations. In practice, paleogenetics enriches paleontology by transforming fossils from simple “morphological objects” into biological archives capable of revealing, at the molecular level, the evolutionary history of animal and human life. In this integrated approach, paleontology supplies the stratigraphic, chronological, and morphological framework, while paleogenetics contributes genetic evidence that validates or reformulates evolutionary hypotheses, together enabling a more comprehensive reconstruction of the history of life on Earth.



Fig.1: *Coelodonta antiquitatis*,
Encyclopedia Britannica. www.britannica.com



Fig. 2. *Mammuthus primigenius*,
drawing by Kennis, 1999.



Fig 3. *Neanderthal skull*, Tabun Cave, Israel,
The Israel Museum, Jerusalem. [Wikipedia. www.wikipedia.org](http://Wikipedia.org)

In the study of biological evolution, *paleontology* and *genetics* represent two fundamental disciplines that provide independent yet deeply interconnected lines of evidence. *Fossil records* remain among the most of biological transformations across geological eras. Fossils are found within

well-defined sedimentary strata, dated using radiometric methods and stratigraphically correlated on a global scale.

Generally, their order of appearance corresponds to an evolutionary pattern of increasing complexity, from simple to more elaborate organisms, though exceptions and discontinuities do exist. The correlation of fossil-bearing strata from distant regions has made it possible to reconstruct a global chronology of life on Earth. In this context, transitional forms between major taxonomic groups, such as *Archaeopteryx* or *Tiktaalik*, have exceptional scientific value, offering insights into the mechanisms of species transformation. The distribution of fossils follows precise ecological and temporal rules, where some species are frequently found together, while others never co-occur, suggesting biological succession and replacement through geological time.

Modern *genetics* and, more recently, *paleogenetics*, have greatly expanded the possibilities for testing these paleontological hypotheses. Genetic, molecular, and morphological similarities between organisms are interpreted as evidence of *common descents*, and comparative genomic analysis now allows the construction of *phylogenetic trees* that broadly confirm the succession observed in the fossil record. In particular, paleogenetics has revealed unexpected continuities and interbreeding among apparently distinct species, such as *Homo sapiens*, *Neanderthals*, and *Denisovans*, offering a molecular perspective on evolutionary processes. However, this concordance between paleontology and genetics is not without challenges, as in some cases the fossil record reveals periods of “stasis,” during which species appear to remain morphologically unchanged over long intervals. Similarly, the sudden emergence of major biological diversity—such as the *Cambrian explosion*—continues to raise questions regarding the timing and mechanisms of evolution.

Thus, the study of the relationship between *paleontology* and *DNA* is particularly valuable today for its ability to reconstruct the evolution of species, population migrations, biological adaptations, and environmental changes over time. In Western and Northern European countries, *paleogenetic research* is highly developed, with advanced academic centers using modern sequencing and bioinformatics technologies to analyze fossil DNA, especially from prehistoric human and animal remains. Major interdisciplinary projects carried out in countries such as France, Germany, the United Kingdom, and the Scandinavian countries have produced significant results concerning the origin and spread of modern humans, their interactions with Neanderthals, and the ecological

changes that occurred during the *Pleistocene* and *Holocene*, including shifts in characteristic flora and fauna.

In Albania, research is still developing, with most activity focused on classical *paleontology*, *stratigraphy*, and *sedimentology*. Although local infrastructure for ancient DNA (*aDNA*) studies remains limited, promising archaeological sites—especially in southern Albania—offer valuable opportunities for expanding paleogenetic research in the region, thereby contributing to the understanding of human evolution in the Balkans, a crucial corridor in prehistoric migrations.

Moreover, the Pleistocene–Holocene sedimentary deposits of the Albanian Alps (Valbona, Theth), which contain glacial and moraine sediments; the valleys of the Drin, Vjosa, and Seman rivers, with fluvial terraces; the Korça Basin, with lacustrine and peat deposits; the Adriatic coastal zone between Buna and Vlora, with marine and lagoonal sediments; and the mountain piedmonts, where alluvial cones develop, may all represent ideal settings for paleogenetic analyses through the study of fossil and sedimentary archives.

In addition, *cave sedimentary deposits* in Albania can provide highly valuable material for *paleogenetic DNA* studies due to the relatively stable environmental conditions that allow long-term preservation of biological remains. Relevant examples include the *Cave of Pellumbi*, where cave bear fossils and Paleolithic habitation traces have been discovered, as well as other deep caves in northern Albania with complex stratigraphy. These cave deposits offer opportunities for extracting DNA from bones, teeth, and other organic remains, although success depends on the preservation state of the material and on strict contamination control. While *speleological* and *archaeological* research in Albania is relatively well developed, direct genetic studies of human and animal DNA from these deposits remain limited, indicating significant potential for future research in *paleogenetics*.

With regard to *ancient DNA (aDNA)*, it is well established that it represents one of the most revolutionary, yet fragile, areas of molecular biology, because DNA molecules are highly unstable and rapidly degrade after an organism's death as a result of *hydrolysis*, *oxidation*, and *microbial activity*. Its survival depends strongly on environmental conditions, particularly low temperatures, dryness, and the absence of oxygen. In such favorable settings, such as cave sediments or Siberian permafrost, DNA fragments can persist for more than one million years. The oldest analyzed sequences originate from the teeth of Siberian mammoths dated to

approximately *1.2 million years*, whereas in temperate climates the realistic limit of DNA preservation does not exceed about *100,000 years*.

The *Pleistocene–Holocene* time frame represents the ideal geological interval for DNA preservation, and the integration of *paleontology* and *sedimentology* focused on this period with *genetics* provides an essential interdisciplinary framework for understanding the recent evolution of species, especially fauna and hominins, as well as paleoecological conditions. In this context, *paleogenetics* plays a central role, allowing the extraction and analysis of ancient DNA from well-preserved fossils recovered from permafrost, caves, or even arid environments. As noted above, this geological interval offers optimal conditions for genetic preservation, which is why most paleogenetic studies focus on species dating from the Late *Pleistocene* and Early *Holocene*, such as mammoths, woolly rhinoceroses, cave bears, and various ancient and modern human populations. Correlating genetic data with paleontological, sedimentological, and archaeological evidence enables the reconstruction of population dynamics, migrations, ecological adaptations, selective pressures, and extinction processes. In humans, this approach has allowed the identification and sequencing of *Neanderthal* and *Denisovan* genomes, as well as the detection of genetic admixture between these groups and the emergence of *Homo sapiens*. Similarly, in fauna, *paleogenetics* has contributed to understanding the factors that led to the extinction of large species during the *Pleistocene–Holocene* transition, including climatic impacts and anthropogenic pressures. The analysis of ancient DNA from the *Pleistocene–Holocene* interval has thus revolutionized our understanding of species evolution and ecological dynamics.

However, DNA cannot be extracted from every fossil. Fossil DNA, known in the scientific literature as *ancient DNA (aDNA)*, is one of the most groundbreaking areas of molecular biology and paleogenetics, but the chemical fragility of DNA and the environmental conditions under which it has been preserved over geological time pose serious challenges. DNA is an unstable macromolecule that begins to degrade immediately after an organism's death under the influence of *hydrolysis*, *oxidation*, and *microbial activity*. Without exceptional preservation conditions, its structure undergoes fragmentation and irreversible alterations, making reconstruction impossible after long intervals. The maximum theoretical survival time of DNA is estimated to be approximately 1–1.5 million years, but only in exceptional environments, such as the cold, dry, oxygen-free

Siberian permafrost, where molecular degradation is drastically slowed, allowing the preservation of sufficient fragments for sequencing.

The oldest DNA analyzed to date originates from the teeth of mammoths discovered in northeastern Siberian permafrost (Kornienko *et al.* 2018; Calábková *et al.* 2022), dated to approximately *1.2 million years*. In temperate climates, especially in cave deposits, genetic reconstructions have been achieved for material up to *50,000–100,000 years* old, as in the case of *Denisovans* and *Neanderthals* (Reich *et al.*, 2010; Prüfer *et al.* 2014; 2017). Classic examples include *Neanderthal* DNA extracted from bones preserved in cold European caves (Slon *et al.* 2017) and the genome of a Middle *Pleistocene* horse, approximately *700,000 years* old (Orlando *et al.* 2013), both of which confirm the decisive role of environmental conditions in preserving genetic information.

The main factors influencing DNA stability are *temperature*, *humidity*, *pH*, and the physical protection provided by the mineral matrix of dense bones, such as the petrous portion of the temporal bone or teeth. In temperate or tropical climates, where humidity and thermal variation accelerate degradation, genetic material is typically destroyed within tens of thousands of years, drastically limiting analytical potential. In conclusion, although fossil DNA offers a unique window into the biological and evolutionary past of species, the temporal range for its study does not exceed, even under the most favorable conditions, *1–1.5 million years*. In most archaeological and paleontological contexts accessible to humans, the realistic threshold remains below *100,000 years*, as determined by chemical degradation and preservation conditions. Nevertheless, modern *next-generation sequencing* technologies make it possible to obtain reliable genetic data even from highly degraded samples.

Analyses of DNA from *sedimentary deposits* in caves and lakes have particularly high potential because these environments provide optimal conditions for long-term preservation of genetic material. Sediments protect DNA from mechanical degradation and exposure to harmful environmental factors, while stable microclimatic conditions—such as constant temperatures, relative humidity, and often *anoxic* settings—slow chemical and biological degradation processes, including *hydrolysis*, *oxidation*, and *microbial activity*. Moreover, these deposits accumulate organic matter from multiple sources, including direct plant and animal remains, feces, hair, pollen, and organic material transported by water and wind, enabling detailed reconstructions of past fauna, flora, and microbial communities. The stratigraphy of these sediments provides a precise

temporal framework, allowing DNA to be correlated with climatic changes, species migrations, and human activities. Consequently, cave and lake sediments constitute extensive “genetic archives” capable of revealing past biological diversity and ecological dynamics at both community and regional scales. The combination of physical protection, favorable chemical conditions, and integrated accumulation of biological material makes these environments among the most promising for *paleogenetic* studies.

Animal *ancient DNA* (aDNA) from caves represents a crucial source of information for reconstructing extinct faunas and understanding past ecological and climatic dynamics. Cave deposits—including sediments, bones, teeth, hair, and fat residues—can preserve aDNA from animals that lived nearby or were transported by predators, humans, or natural processes. Analysis of this *sedimentary DNA* allows species identification even in the absence of visible fossils, opening new avenues for paleogenetic research. Recent studies have detected aDNA from mammoths, bison, horses, and woolly rhinoceroses in Siberian caves older than *50,000 years*, providing detailed insights into *Pleistocene* faunas (Vartanyan, 2008; van der Valk *et al.* 2021). In *Denisova Cave* (Altai Mountains), animal aDNA has helped reconstruct archaic ecosystems and establish trophic relationships between hominins and contemporaneous fauna. European caves such as *Vindija* (Croatia) and *Scladina* (Belgium) have yielded aDNA from cave bears, wolves, rhinoceroses, and reindeer, confirming coexistence with *Neanderthal* populations. In the Balkans, fossil DNA studies remain limited, but the scientific potential is considerable: sedimentary deposits in Albanian caves may preserve genetic traces of glacial and postglacial faunas, including cave bears, hyenas, wild goats, deer, and bats. Analysis of animal aDNA provides insights into extinct ecosystem reconstruction, migration patterns, climatic adaptations, and interactions between human activities and natural habitats. Albanian caves therefore constitute a valuable geological, paleontological, and archaeological heritage, offering optimal conditions for the preservation of sedimentary aDNA.

In addition to cave sediments, *lake sediments* can also provide extremely valuable genetic information. The recovery of DNA from such deposits enables the reconstruction of *Holocene* vegetation and faunal diversity, offering detailed perspectives on ecological changes recorded over millennia. However, the study of fossil DNA faces major challenges related to contamination by modern DNA and chemical degradation of the

molecule, requiring rigorous extraction and sequencing protocols as well as carefully contextualized data interpretation. Recent research emphasizes that ancient DNA analysis complements, and in some cases corrects, traditional paleontological evidence, demonstrating that human and species evolution is a complex, multidimensional, and interconnected process.

aDNA from lake sediments (Willerslev *et al.* 2003) represents a powerful tool for reconstructing past ecosystems, biodiversity, and environmental changes, complementing traditional paleontological and paleoecological methods. *Sedimentary DNA* preserved in lacustrine deposits originates from plants, animals, and microorganisms that lived in or near the lake, as well as from organic matter transported by wind, water, or the activity of living organisms. Because this DNA can survive even in the absence of visible fossils, it enables the identification of species that leave no morphological traces. Analyses of lake sediment DNA (*sedaDNA*) provide high-resolution reconstructions of vegetation dynamics, faunal composition, and microbial communities over time, allowing the study of ecological succession, species migrations, and responses to climatic fluctuations during the *Holocene* and Late *Pleistocene*. Furthermore, integrating genetic data with sediment stratigraphy, pollen analyses, and geochemical proxies allows correlations between environmental changes, human activities, and ecosystem adaptations. In practice, lake sediment DNA analysis has been used to track changes in plant communities, monitor faunal variation in alpine lakes, and detect human-induced environmental modifications. In regions such as Albania, lake sediments offer particularly valuable opportunities for paleogenetic studies, as tectonic lakes, floodplain deposits, and peat layers can preserve DNA under stable, anoxic, or cold conditions.

The recovery of ancient DNA from lake sediments provides an innovative method for reconstructing biodiversity and ecological changes during the *Holocene*, surpassing traditional techniques such as pollen and macrofossil analyses and allowing the detailed study of plant and animal communities even in the absence of visible fossils (Pedersen *et al.* 2013; Parducci *et al.* 2017; Voldstad, 2020; Garcés-Pastor *et al.* 2022). Recent studies have demonstrated the effectiveness of this method in diverse regions. For example, analyses of DNA from lake sediments in northern *Fennoscandia* revealed that terrestrial plant diversity was significantly influenced by regional climate and soil nutrients, providing a detailed picture of vegetation change. In another study, DNA extracted from lake

sediments in *Ringhorndalen*, Norway, identified shifts in plant and animal communities throughout the *Holocene*, correlating them with climatic variability and human activities (Jia *et al.* 2022; Han *et al.* 2024). The method involves extracting DNA from sediment-core samples followed by sequencing to identify species present during different historical periods. This approach produces detailed temporal records of biodiversity and provides insights into how lacustrine ecosystems have fluctuated and adapted in response to climate change and human intervention.

In conclusion, ancient DNA analysis from lake sediments represents a powerful and versatile approach for studying *Holocene* lacustrine ecosystem evolution, offering detailed perspectives on the complex interactions between climate, environment, and human activity, and highlighting how these communities have adapted and transformed over millennia.

In Albania, the study of ancient DNA is still developing, with a primary focus on *human DNA* research, whereas sedimentary and paleontological DNA—namely, ancient DNA extracted from sediments or associated with fossils—remains far less developed, thus offering significant research opportunities. Regarding human DNA, recent advances include analyses of ancient genomes from southeastern Europe showing genetic continuity between *Bronze* and *Iron Age* populations and modern Albanians, as well as studies of mitochondrial and *Y-chromosome* haplogroups that reveal regional particularities while maintaining affinities with other European populations. In addition, research on skeletal remains from archaeological sites demonstrates the applicability of human DNA studies in the Albanian context.

Nevertheless, sedimentary and fossil DNA remain largely unexplored in Albania, despite the demonstrated success of these methods in other regions for recovering ancient DNA from diverse environments, providing data on past fauna, flora, and microorganisms, and contributing to paleoecological and environmental reconstructions. This approach is particularly relevant in Albania due to its complex geological setting—including mountainous regions, tectonic lakes, caves, and coastal plains—where well-preserved sediments may retain valuable genetic signals.

The synergy between *sedimentology*, *paleontology*, and *genetics* can yield integrated reconstructions linking stratigraphic and paleoecological data with genetic evidence, thereby providing a more holistic view of the past. In the Albanian context, with its complex geological history, this innovative approach could complement human DNA studies and enhance

understanding of how environments have influenced populations and ecosystems. Thus, *sedimentary paleogenetics* represents a unique interdisciplinary, methodological, and academic research opportunity capable of offering new perspectives on the biological and cultural evolution of the region.

The *Quaternary* deposits of Albania constitute a crucial geological archive for reconstructing past climates and environmental changes in the *Eastern Mediterranean*, as they provide valuable data for understanding active tectonics, crustal uplift, and the development of groundwater systems within extensive alluvial formations. Moreover, these deposits enable correlations between geomorphological evolution and archaeological settlement patterns. Although significant progress has been achieved through studies in *palynology*, *radiometric dating*, and *geomorphological mapping*, additional research is required to integrate Albania more fully into the wider Mediterranean and European *Quaternary* stratigraphic framework.

In Albania, the integration of *ancient DNA (aDNA)* studies into *Quaternary* research would significantly enhance multidisciplinary reconstructions of past environments, biodiversity, and human–environment interactions. *Sedimentary DNA (sedaDNA)* analyses could provide molecular evidence of past ecosystems by identifying plant, animal, and microbial species that inhabited specific climatic intervals, thereby complementing traditional paleontological and palynological data. Moreover, genetic variability patterns derived from *aDNA* would allow correlations between biological evolution and glacial–interglacial oscillations, elucidating adaptive responses and migration dynamics during *Quaternary* climatic shifts. Comparative genetic data from sediments, bones, or peat layers could also clarify regional biological continuity and connectivity between Albanian populations and those of the wider Balkan and Mediterranean regions, contributing to the reconstruction of dispersal routes and glacial refugia. Furthermore, integrating *aDNA* with geomorphological and archaeological evidence could document early human presence, pastoral activities, and agricultural transitions during the *Holocene*, aligning biogenetic signals with landscape evolution and settlement phases. Consequently, the application of *paleogenetic* approaches would transform *Quaternary* deposits from purely sedimentary archives into complex *biogeological* records capable of revealing the intertwined history of climate, life, and human occupation in southeastern Europe. Understanding the geology of *Quaternary* deposits

in Albania is essential for ancient DNA studies, as sedimentary contexts provide crucial information about preservation, stratigraphy, and the environmental conditions that influence the survival of genetic material over time. Therefore, the following section briefly presents key information regarding these deposits.

Quaternary Deposits in Albania: Stratigraphy, Depositional Systems, and Geomorphological Evolution

According to Xhomo *et al.* (2002), the *Quaternary* deposits of Albania represent one of the most extensive and diverse sedimentary archives in the region, occupying intramontane basins, river valleys, the *Adriatic* coastal plain, and mountain piedmonts. Their spatial continuity and lithofacies variability reflect the combined influence of active tectonics, climatic oscillations, sea-level fluctuations, and hydrographic reorganization throughout the *Pleistocene* and *Holocene*. Nearly all major genetic types of continental, transitional, and marine deposits are represented, including alluvial, proluvial, colluvial, glacial, lacustrine, swamp, lagoonal, deltaic, and coastal-marine facies. In many basins, these facies occur as composite successions (e.g., alluvial–proluvial, lacustrine–proluvial, lacustrine–alluvial), reflecting shifts in sediment supply, basin hydrology, and relief energy through time (Figure 4).

TECTONIC SCHEMA OF ALBANIDES

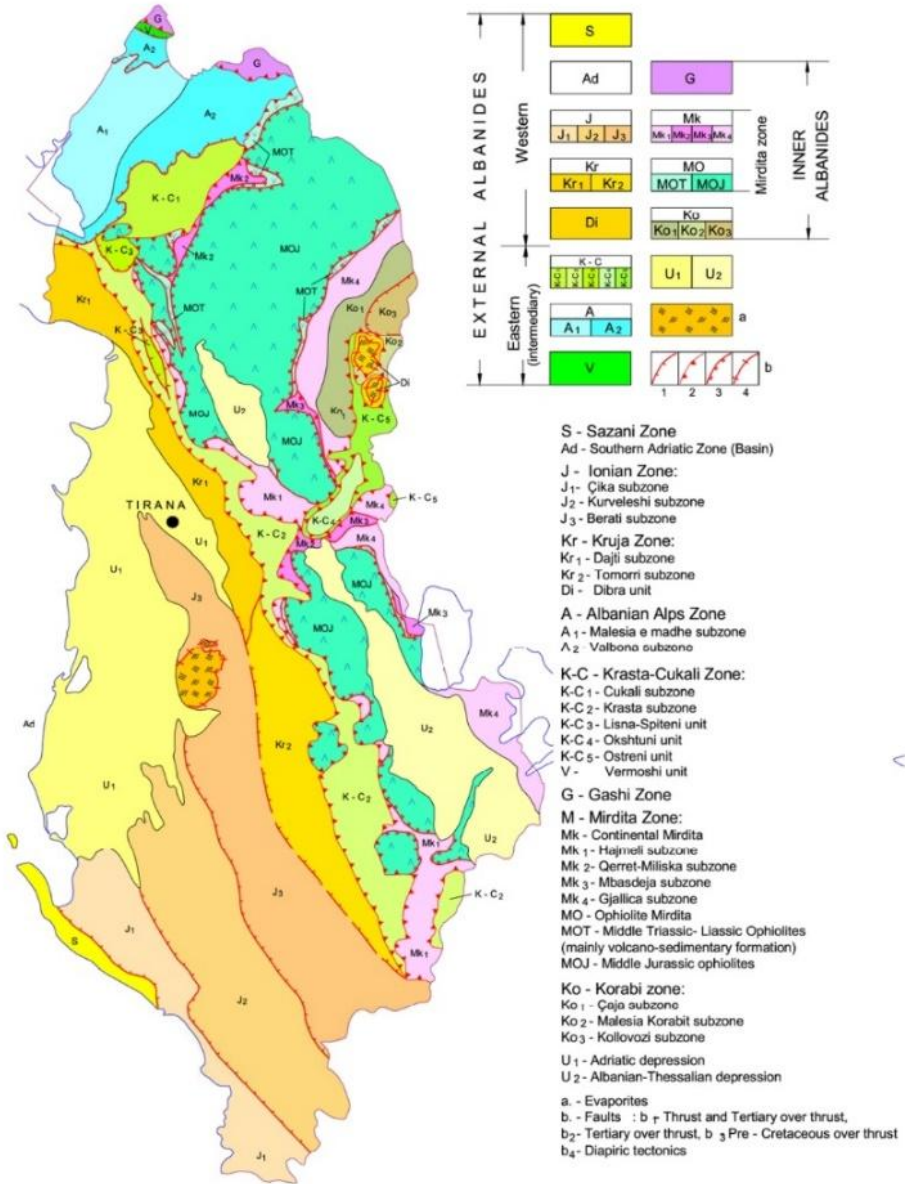


Fig. 4. Geological map of Albania.

1. Upper Pliocene – Early Quaternary

These deposits, reaching thicknesses of up to 150–200 m, are predominantly lacustrine to mixed lacustrine–proluvial in character and are well developed in the basins of *Tropoja*, *Kukës*, *Peshkopia*, *Kolonja*, *Erseka*, and *Saranda*, where they unconformably overlie *Mesozoic* carbonate formations or the ophiolitic basement. The sedimentary successions typically consist of alternating clays, silts, sands, and conglomerates, locally containing peat lenses and freshwater faunal remains. Their internal architecture reflects the development of low-gradient basins influenced by periodic clastic influxes from surrounding highlands, recording the transition from the *Neogene* tectonic basin stage to the onset of *Quaternary* climatic instability.

2. Pleistocene

The Pleistocene represents the most geomorphologically expressive segment of the Quaternary, encompassing deposits formed during multiple glacial–interglacial cycles. The most diagnostic features are the extensive alluvial terrace systems preserved along major river valleys. In the Devoll, Osum, Shkumbin, Vjosa, Drin, and Kiri valleys, up to six terrace levels have been identified, rising 20–160 m above the present river channels. These deposits range from well-cemented conglomerates to coarse gravels and sands, reflecting alternations between high-energy transport phases and episodes of valley incision. Radiometric dating, archaeological evidence, and regional geomorphological correlations relate these terraces to the Günz, Mindel, Riss, and Würm glacial stages. Proluvial fans, slope breccias (*colluvium*), glacial moraines, and lacustrine–terrestrial sequences are also widespread. Glacial deposits are best preserved in the *Albanian Alps* and in the *Korab*, *Tomorr*, and *Nemerçkë* massifs, where cirques, terminal moraines, and unsorted till bodies indicate *Late Pleistocene* glaciation. In contrast, the piedmonts of *Gramoz*, *Tepelena*, *Koplik*, and *Erseka* host thick proluvial cones, locally exceeding 50–80 m in thickness, formed during interglacial phases of intensified hydrodynamic activity.

3. Holocene

The Holocene succession records the most recent phase of landscape evolution and is particularly well represented in the Adriatic foreland.

Alluvial deposits, 10–30 m thick, fill the coastal plains of Shkodra, Lezha, Tirana–Ishëm, Lushnja, Fier, Vlora, and the Korça–Bilisht Basin. These deposits extend upstream along the major rivers, forming modern floodplains and low terraces. They consist mainly of fine sands, silts, and clays, in marked contrast to the underlying Pleistocene gravels, and constitute one of Albania’s principal aquifer systems.

The subdivision of the Holocene into Early and Late (Historical) phases is supported by pollen and radiocarbon data from Maliq and Koplik, where lake, peat, and soil sequences record environmental changes between approximately 4500 and 2200 BC, including the earliest evidence of cultivated plants such as *Juglans*, *Olea*, and *Castanea*.

Coastal evolution over the last 5,000 years has been strongly influenced by sea-level rise, delta progradation, and river alluviation. During this time, the Seman, Shkumbin, and Vjosa deltas have migrated laterally, repeatedly modifying the shoreline and giving rise to lagoonal and swamp systems such as Karavasta, Narta, Tërbufi, and Topoja.

The karstic relief of Albania, developed on Mesozoic and Paleogene limestones, has promoted the formation of numerous caves, galleries, and sinkholes, many of which were frequented or inhabited by prehistoric humans and animals. For ancient DNA studies, the characteristics of the cave environment are crucial for the preservation of genetic material. Ideal sites should be minimally disturbed by recent human activity; as modern contamination can compromise sample integrity. Caves with stable microclimates, constant temperature, and humidity enhance DNA survival, while stratified sedimentary deposits, such as fine sands or clays, provide both physical protection and chronological context. Karstic caves, which are widespread in Albania, particularly those with limited human access, are especially suitable because they offer natural protection against environmental fluctuations and facilitate the accumulation of well-preserved faunal remains.

Even well-explored sites continue to provide valuable opportunities for ancient DNA research. Notable examples include Konispoli Cave, north of Saranda, one of the deepest caves in the Balkans, which preserves Pleistocene and Holocene deposits containing animal remains, shells, stone tools, and complex stratigraphic sequences suitable for sedimentary DNA analysis (Russell, 1999; Hansen, 2001; Harold *et al.*, 2006). In addition, during the 1980s, a cave near the town of Gajtani was discovered, yielding numerous faunal fossils (Fistani, 1987; 1990; 1991; 1993 (a) (b); 1995; 1996). Approximately 30–40 m in front of this cave, archaeologists

uncovered a large assemblage of Middle Paleolithic flint tools produced using Levallois and Mousterian techniques, together with Upper Paleolithic artifacts. Of particular interest are prehistoric animal bones, including *Macaca*, *Dicerorhinus*, *Ursus deningeri*, and *Canis lupus mosbachensis*, all dating to the Pleistocene (Fjalori Enciklopedik Shqiptar, Vol. III: N–Zh, 2009).

Microclimatic stability, absence of direct sunlight, and the presence of calcium carbonate contribute to the preservation of genetic material, making Albanian caves highly promising for future paleogenetic projects. These sites offer unique insights into Balkan faunal evolution, glacial migrations, and human–environment interactions during the Late Pleistocene and Early Holocene. In Albania, DNA from lake sediments can also be studied in environments favourable for genetic preservation, including tectonic and depression lakes such as Lake Prespa in the Korça region, Lake Ohrid (Wagner *et al.*, 2017) on the northeastern border, and mountain lakes in the Albanian Alps (Theth, Valbona), which provide stratified, cold, and stable depositional conditions. Additional promising environments include floodplains and lowland deposits along the Drin, Vjosa, Shkumbin, and Seman rivers, where Holocene terraces and floodplains preserve plant and animal DNA, as well as peat layers and small marshy lakes, particularly in the Korça Basin and lowland river plains.

As a future perspective, the integration of paleontology, sedimentology, and ancient DNA research holds great potential for reconstructing past ecosystems, biodiversity, and human–environment interactions in Albania. Although paleogenetic studies in the region remain at an early stage, the country’s diverse Quaternary deposits, karstic caves, lakes, floodplains, and peat layers provide ideal conditions for the preservation of genetic material. These environments, characterized by stable microclimates, stratified sediments, and minimal modern disturbance, offer exceptional opportunities to recover DNA from fossils, sediments, and other organic remains. Future research could illuminate the evolutionary history of Pleistocene and Holocene faunas, trace human migrations and cultural development, and clarify ecological responses to climatic change. By integrating genetic, paleontological, archaeological, and geomorphological data, Albanian sites have the potential to become key reference areas for understanding biodiversity dynamics and human–environment interactions in the Balkans.

Declarations

Data accessibility: websites, platforms

Declaration of AI use: There has been no use of AI when writing the actual paper.

Author Contributions

AU, paleontologist – conceptualization, writing and development of paleontological and paleogenetic framework, including data synthesis and figure preparation.

AF, sedimentologist – sketch of the geological and sedimentological framework, figure preparation.

MP– contributed stratigraphic expertise and to the integration of the stratigraphic context within the manuscript. All authors reviewed and approved the final version of the manuscript.

Authors' approval: All the authors have approved the final version of the manuscript

Conflict of interest declaration: The authors declare that they have no conflict of interest related to this work.

Funding: no funding

REFERENCES

- Akademia e Shkencave e Shqipërisë.** *Fjalori Enciklopedik Shqiptar. Vëllimi III: N-Zh.* Tiranë: Shtëpia Botuese “Kristalina-KH”, 2009. ISBN 978-99956-10-32-6.
- Fistani A. 1987.** Gjetje fosilesh me interes paleoetnologjik nga shpella e Gajtanit (Shkodër). *Buletini Shkencor*, **24(1)**: 117–132.
- Fistani A. 1990.** *Ursus deningeri von Reichenau* nga shpella e fosileve – Gajtan (Shkodër). *Buletin i Shkencave Natyrore, Seria B*, **44(4)**: 53–63.
- Fistani A. 1991.** First record of a fossil *Cervus elaphus* L., 1758, from Albania. *Zeitschrift für Säugetierkunde*, **56**: 248–251.
- Fistani A. 1993.** Découverte d'un humérus d'ursidé à l'olécrâne perforé dans le site de Gajtan I (Shkodër) en Albanie du nord. *L'Anthropologie*, **97(2/3)**: 223–238.
- Fistani A; Crégut-Bonnoure E. 1993.** Découverte d'*Ursus thibetanus* (Mammalia, Carnivora, Ursidae) dans le site pléistocène moyen de Gajtan (Shkoder, Albanie). *Geobios*, **26(2)**: 241–263. doi:10.1016/S0016-6995(93)80018-M.

- Fistani A. 1993.** Découverte d'un humérus d'ursidé à l'olécrâne perforé dans le site de Gajtan I (Shkodër) en Albanie du nord. *L'Anthropologie*, **97(2/3)**: 223–238.
- Fistani, Anton. 1995.** The large mammals of the Middle Pleistocene from Gajtan I cave, Shkoder, North Albania. *Kumtari*, **7**: 3–9.
- Fistani A. 1996.** *Sus scrofa priscus* (Goldfuss, de Serres) from the Middle Pleistocene layers of Gajtan I site. *Annales de Paléontologie*, **82(3)**: 177–229.
- Garcés-Pastor S, Coissac E, Lavergne S, Schworer C, Theurillat J-P, Heintzman PD, Wangensteen OS, Tinner W, Fabien R, Heer M, Rutzer A, Walsh Kevin, Lammers Y, Brown AG, Goslar T, Rijal DP, Karger DN, Pellissier L, PhyloAlps Consortium, Heiri O, Alsos IG. 2022.** High resolution ancient sedimentary DNA shows that alpine plant diversity is associated with human land use and climate change. *Nature Communications*, **4; 13 (1)**: 6559. doi:10.1038/s41467-022-34010-4.
- Han X, Feng L, Zhang N, Hu Sh, Gu Zh, Huang X, Yang X, Chen F. 2024.** SedaDNA reveals mid- to late-Holocene aquatic plant and algae community dynamics in a Tibetan lake. *Palaeogeography, Palaeoclimatology, Palaeoecology*, **650**: 112344. doi: 10.1016/j.palaeo.2024.112344.
- Hansen JH. 2001.** Mbetje bimore në shpellën e Konispolit (Plant remains from Konispol Cave). *Iliria*, **30(1)**: 101–115. doi: 10.3406/iliri.2001.1725.
- Harrold FB, Russell N, Wickenset J. 2016.** The Mesolithic of Konispol Cave, Albania. *Iliria*, **40(1)**: 7–38. doi: 10.3406/iliri.2016.2514.
- Jia W, Anslan S, Chen F, Cao X, Dong H, Dulias K, Gu, Zh, Heinecke L, Jiang H, Kruse S, Kang W, Li K, Liu S, Liu X, Liu Y, Ni J, Schwalb A, Stoof-Leichsenring KR, Shen W, Tian F, Wang J, Wang Y, Wang Y, Xu H, Yang X, Zhang D, Herzsuh U. 2022.** Sedimentary ancient DNA reveals past ecosystem and biodiversity dynamics on the Tibetan Plateau. *Quaternary Science Reviews*, **293**: 107703. doi:10.1016/j.quascirev.2022.107703.
- Calábková G, Chlachul J, Ivanov M, Hložková M, Czerniawska J, Vašinová-Galiová M, Prokeš L, Gadasa P. 2022** Microbial degradation of Pleistocene permafrost-sealed fossil mammal remains. *Quaternary Research*, **111**: 84–106. <https://doi.org/10.1017/qua.2022.28>.
- Kornienko IV, Faleeva TG, Oreshkova NV, Grigoriev SE, Grigoreva LV, Simonov EP, Kolesnikova AI, Putintseva YA, Krutovsky KV. 2018.** Complete mitochondrial genome of a woolly mammoth (*Mammuthus*

primigenius) from Maly Lyakhovsky Island (New Siberian Islands, Russia) and its phylogenetic assessment. *Mitochondrial DNA Part B: Resources*, **3**(2): 596–598. doi: 10.1080/23802359.2018.1473721.

- Orlando L, Ginolha A, Zhang, G, Froese D, Albrechtsen A, Stiller M, Schubert M, Cappellini E, Petersen B, Moltke I, Johnson PhLF, Fumagalli M, Vilstrup JT, Raghavan M, Korneliussen Th, Malaspina A-S, Vogt J, Szklarczyk D, Kelstrup ChD, Vinther J, Dolocan A, Stenderup J, Velazquez AMV, Cahill J, Rasmussen M, Wang , Min J, Zazula GD, Seguin-Orlando A, Mortensen C, Magnussen K, Thompson JF, Weinstock J, Gregersen K, Røed KH, Eisenmann V, Rubin CJ, Miller DC, Antczak DF, Bertelsen MF, Brunak S, Al-Rasheid Khaled AS, Ryder O, Andersson L, Mundy John, Krogh A, Gilbert MThP, Kjær K, Sicheritz-Pontén Th, Juhl J, Lars OJV, Hofreiter MNR, Shapiro B, Wang J, Willerslev E. 2013.** Recalibrating *Equus* evolution using the genome sequence of an early Middle Pleistocene horse. *Nature*, **499**: 74–78. doi:10.1038/nature12323.
- Parducci L, Bennett KD, Ficetola GF, Alsos IGreve, Yoshihisa S, Wood JR, Pedersen MW. 2017.** Ancient plant DNA in lake sediments. *New Phytologist*, **214**: 924–942. doi:10.1111/nph.14470.
- Pedersen MW, Ginolhac A, Orlando LAA, Olsen J, Andersen K, Holm JM, Funder SV, Willerslev Eske, Kjær KH. 2013.** *A comparative study of ancient environmental DNA to pollen and macrofossils from lake sediments reveals taxonomic overlap and additional plant taxa.* **Quaternary Science Reviews**, **75**: 161–168. doi.org/10.1016/j.quascirev.2013.06.006.
- Prüfer K, Racimo F, Patterson N, Jay F, Sankararaman S, Sawyer S, Heinze A, Renaud G, Sudmant PH, de Filippo C, Li H, Mallick S, Dannemann M, Fu Q, Kircher M, Kuhlwilm M, Lachmann M, Meyer M, Ongyerth M, Siebauer M, Theunert Ch, Tandon A, Moorjani P, Pickrell J, Mulliki JC, Vohr SH, Green RE, Hellmann I, Johnson PhLF, Blanche H, Cann H, Kitzman JO, Shendure J, Eichler EE, Lein ES, Bakken TE, Golovanova LV, Doronichev VB, Shunkov MV, Derevianko, AP Viola B, Slatkin M, Reich D, Kelso J, Pääbo S. 2014.** The complete genome sequence of a Neanderthal from the Altai Mountains. *Nature*, **505**: 43–49. doi:10.1038/nature12886.
- Prüfer K, de Filippo C, Grote S, Mafessoni F, Korlević P, Hajdinjak M, Vernot B, Skov L, Hsieh P, Peyrégne S, Reher D, Hopfe Ch, Nagel S, Marici T, Fu Q, Theunert Ch, Rogers R, Skoglund P, Chintalapati M, Danneman M, Nelson BJ, Key FM, Rudan P, Kučan Ž, Gušić I, Golovanova LV, Doronichev VB, Patterson N, Reich D, Eichler EE,**

- Slatkin M, Schierup MH, Andrés AM, Kelso J, Meyer M, Pääbo S. 2017. A high-coverage Neandertal genome from Vindija Cave. *Science*, **358**: 655–658. doi:10.1038/nature12886.
- Reich D, Green RE, Kircher M, Krause J, Patterson N, Durand EY, Viola B, Briggs AW, Stenzel U, Johnson PLF, Maricic T, Good JM, Marques-Bonet T, Alkan C, Fu Q, Mallick S, Li H, Meyer M, Eichler EE, Stoneking M, Richards M, Talamo S, Shunkov MV, Derevianko AP, Hublin J-J, Kelso J, Slatkin M, Pääbo S. 2010. Genetic history of an archaic hominin group from Denisova Cave. *Nature*, **468**: 1053–1060. doi:10.1038/nature09710.
- Russell, Nerissa. 1999. The Mesolithic-Neolithic Transition in the Faunal Assemblage from Konispol Cave. *Iliria*, **29(1)**: 79–100. doi:10.3406/iliri.1999.1708.
- Slon V, Hopfe Ch, Weiß CL, Mafessoni F, de la Rasilla Marco, Lalueza-Fox C, Rosas A, Soressi M, Knul MV, Miller R, Stewart JR, Derevianko AP, Jacobs Z, Li, B, Roberts RG, Shunkov MV, de Lumley H, Perrenoud Ch, Gušić I, Kučan Ž, Rudan P, Aximu-Petri, A, Essel E, Nagel S, Nickel B, Schmidt A, Prüfer K, Kelso J, Burbano HA, Pääbo S, Meyer M. 2017. Neandertal and Denisovan DNA from Pleistocene sediments. *Science*, **356**: 605–608. doi:10.1126/science.aam9695.
- van der Valk T, Pečnerová P, Díez-del-Molino D, Bergström A, Oppenheimer J, Hartmann S, Xenikoudakis G, Thomas JA, Dehasque M, Sağlıcan E, Fidan FR, Barnes I, Liu Sh, Somel M, Heintzman PD, Nikolskiy P, Shapiro B, SkoglundP, Hofreiter M, Lister AM, Götherström A, Love D. 2021. Million-year-old DNA sheds light on the genomic history of mammoths. *Nature*, **591**: 265–269. doi:10.1038/s41586-021-03224-9.
- Vartanyan S, Arslanov KA, Karhu Juha, Possnert G, Sulerzhitsky LD. 2008. Collection of radiocarbon dates on the mammoths (*Mammuthus primigenius*) and other genera of Wrangel Island, northeast Siberia, Russia. *Quaternary Research*, **70(1)**: 51–59. doi:10.1016/j.yqres.2008.03.005.
- Voldstad L, Alsos IG, Farnsworth WR, Heintzman PD, Håkansson L, Kjellman SE, Rouillard A, Schomacker A, Eidesen PB. 2020. A complete Holocene lake sediment ancient DNA record reveals long-standing high Arctic plant diversity hotspot in northern Svalbard. *Quaternary Science Reviews*, **241**: 106–207. doi:10.1016/j.quascirev.2020.106207.

- Wagner B, Wilke T, Francke A, Albrecht Ch, Baumgarten H, Bertini A, Combourieu-Nebout N, Cvetkoska A, D'Addabbo M, Donders TH, Föller K, Giaccio B, Grazhdani A, Hauffe T, Holtvoeth J, Joannin S, Jovanovska E, Just J, Kouli K, Koutsodendris A, Krastel S, Lacey JH, Leicher N, Leng MJ, Levkov Z, Lindhorst K, Masi A, Mercuri AM, Nomade S, Nowaczyk N, Panagiotopoulos K, Peyron O, Reed JM, Regattieri E, Sadori L, Sagnotti L, Stelbrink B, Sulpizio R, Tofilovska Slavica, Torri P, Vogel H, Wagner Th, Wagner-Cremer F, Wolff GA, Wonik Th, Zanchetta G, Zhang XS. 2017** *The environmental and evolutionary history of Lake Ohrid (FYROM/Albania): interim results from the SCOPSCO deep drilling project. Biogeosciences*, **14**: 2033–2054. doi:10.5194/bg-14-2033-2017.
- Willerslev E, Hansen AJ, Binladen J, Brand TB, Gilbert MThP, Shapiro B, Bunce M, Wiuf C, Gilichinsky DA, Cooper A. 2003.** Diverse plant and animal genetic records from sediments. *Science*, **300**: 791–795. doi:10.1126/science.1084114.
- Xhomo A, Kodra A, Xhafa Z, Shallo M. 2002.** *Gjeologjia e Shqipërisë*. Tirana: Sh.Gj.Sh., 404p.

© 2025 The Authors.

Published by the Albanian Academy of Sciences under the terms of the Creative Commons Attribution License <http://creativecommons.org/licenses/by/4.0/> which permits unrestricted use, provided the original author and source are credited.